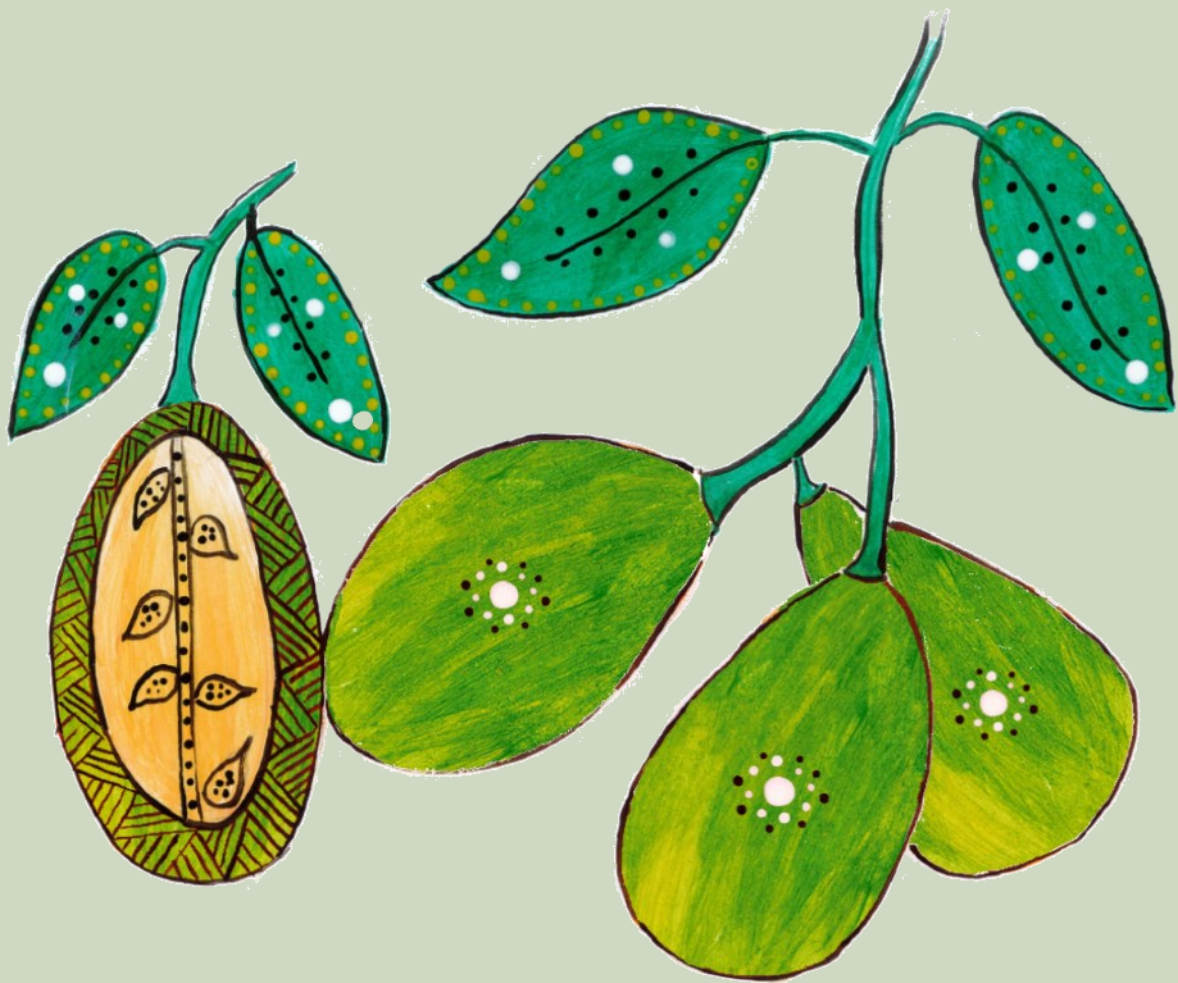


Gayn.gayn-gil

Desert lime month

January



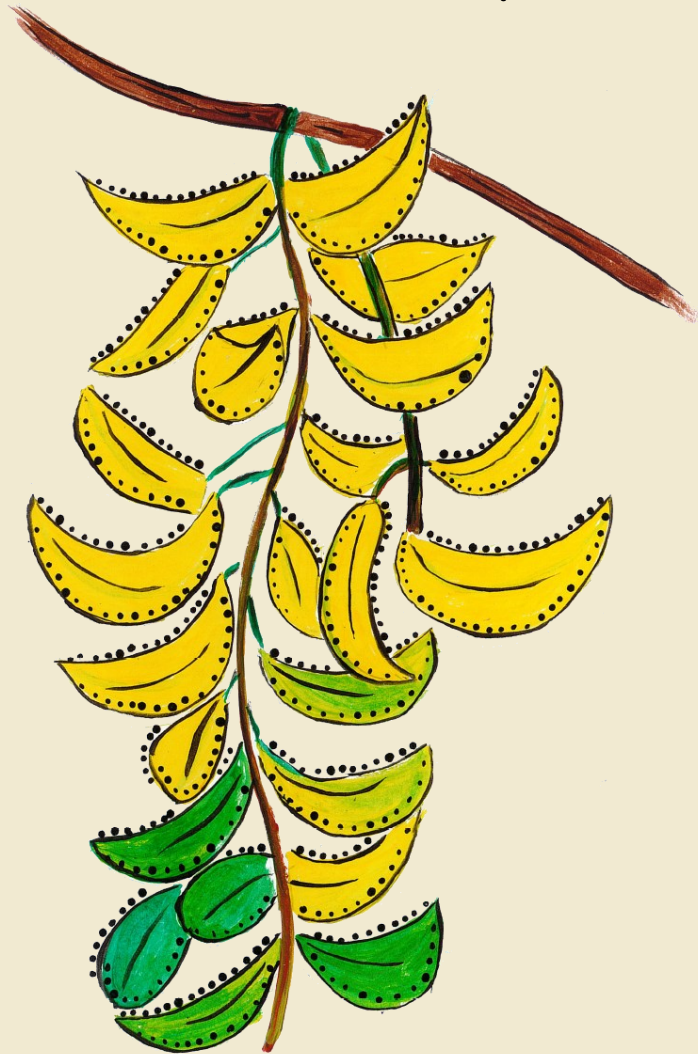
Gayn.gayn, Desert lime, or *Citrus glauca*, is also known as bush lime, wild lime, or native cumquat. The fruit is full of flavour and vitamins.

(From: *Gamilaraay, Yuwaalaraay and Yuwaalayaay Dictionary*, Ash et al., 2003).

Gaagulu-gil

Bush banana month

February



Gaagulu, Native banana, or *Marsdenia australis*, has flowers, leaves and young pods which can be eaten raw. Mature brown pods can be roasted in the coals from the fire. The roots can also be roasted, pounded with rocks to separate the flesh from the tough core – then the skin and flesh are eaten.

(From: *Gamilaraay, Yuwaalaraay and Yuwaalayaay Dictionary*, Ash et al., 2003).

Ngaybaan-gil

Nepine fruit month

March



Ngaybaan, nepine, or *Capparis lasiantha*, is common in the west. Nepine is a low, spiky shrub or climbs up trees. Yellow passionfruit-like fruit ripen in autumn. The fruit can be eaten, and honey from flowers can be used as a remedy for coughs. The plant, including roots, can be soaked and the water applied to swellings, snake bites, insect bites and stings.

(From: *Gamilaraay, Yuwaalaraay and Yuwaalayaay Dictionary*, Ash et al., 2003).

Bulawaa-gil

Emu pair month

April



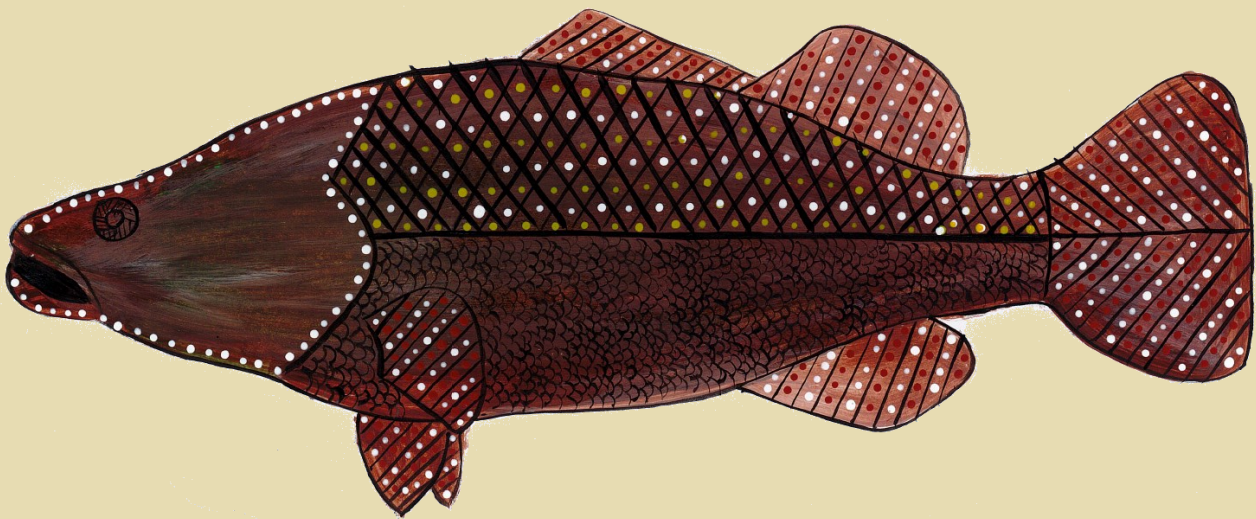
This is the time when emus are often seen in pairs for breeding. Pairs of emu are called **bulawaa**, from the word **bulaarr** which means 'two'.

(From: Gamilaraay, Yuwaalaraay and Yuwaalayaay Dictionary, Ash et al., 2003).

Guduu-gil

Murray cod month

May



Guduu breeding season is late spring to early summer. Traditionally it was common to wait until the first big frosts came to start catching the big guduu. The fishing of big guduu continued all winter.

Guduu love **baliyaa gungan/garriil gali** (cold water). Their favourite **yuul** (food) is **gaygay** (catfish). The **gaygay** nests in shallow water .

(Information from Walgett Elder Ted Fields, 2021.)

Garriil-gil

Cold month

June



Barrgay-gil

Emu chick month

July

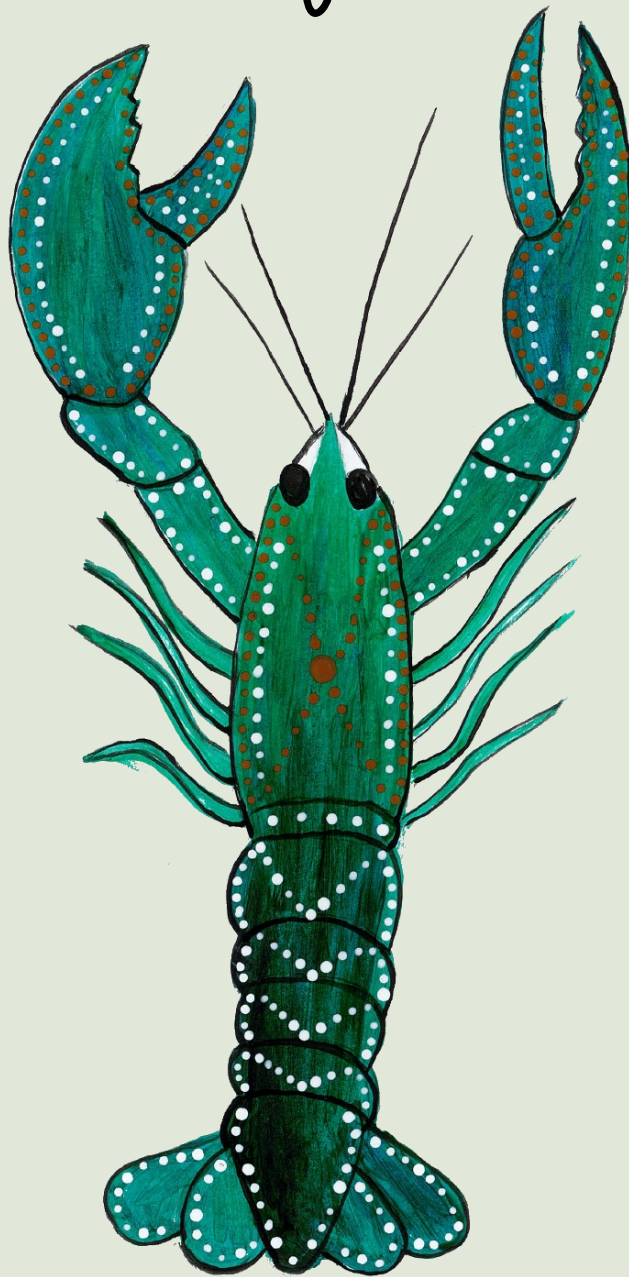


This is the time when **barrgay** emu chicks can be seen. They are older than **bagabaga**, when the chick's stripes have gone.

Giirray-gil

Yabby (crayfish) month

August

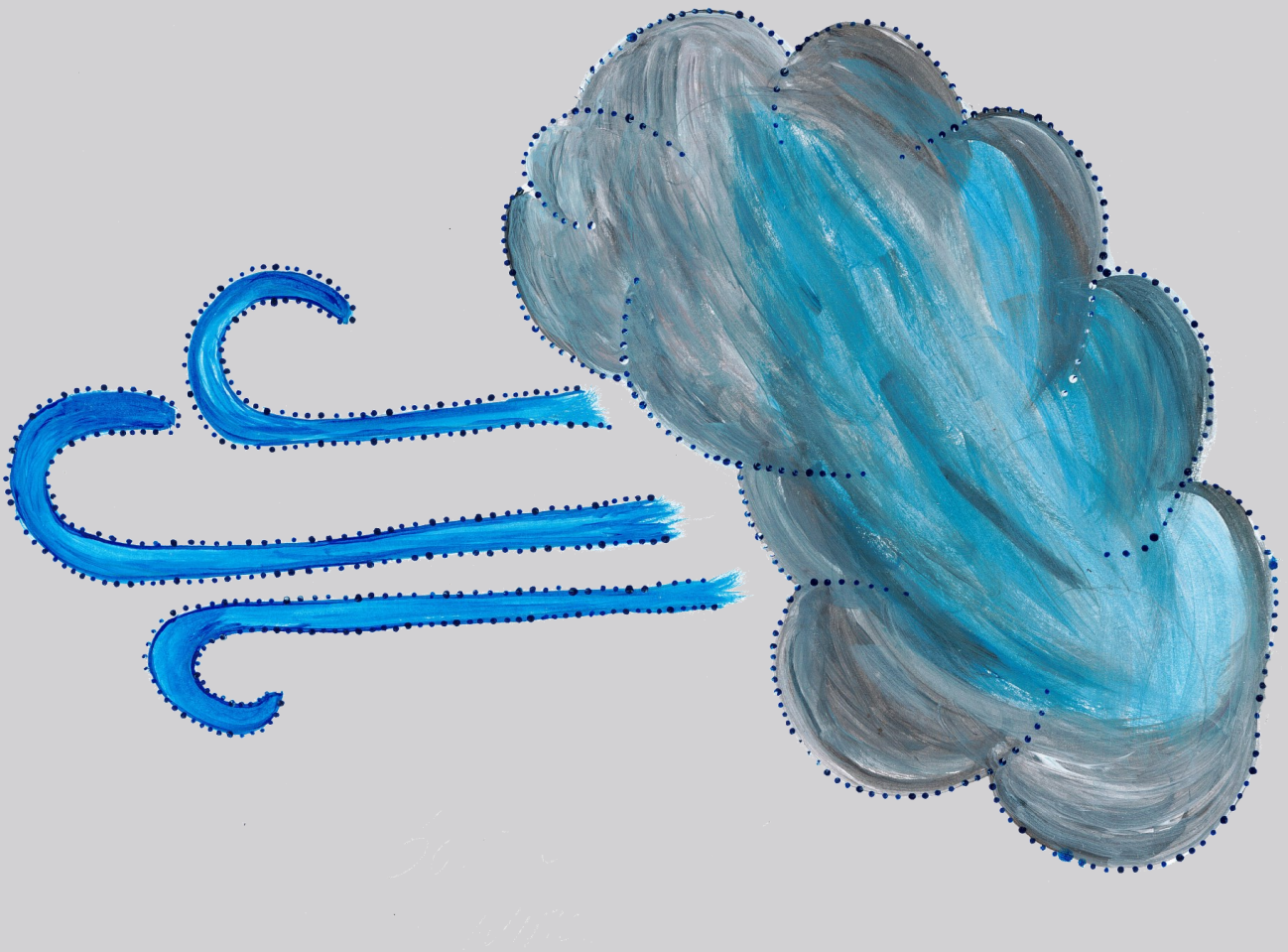


This is the time when yabbies (crayfish) breed.

Maalinha-gil

Southwest wind month

September



Maalinha are the breezes that come with showers from the southwest at this time.

Guwadhāa-gil

Quandong month

October



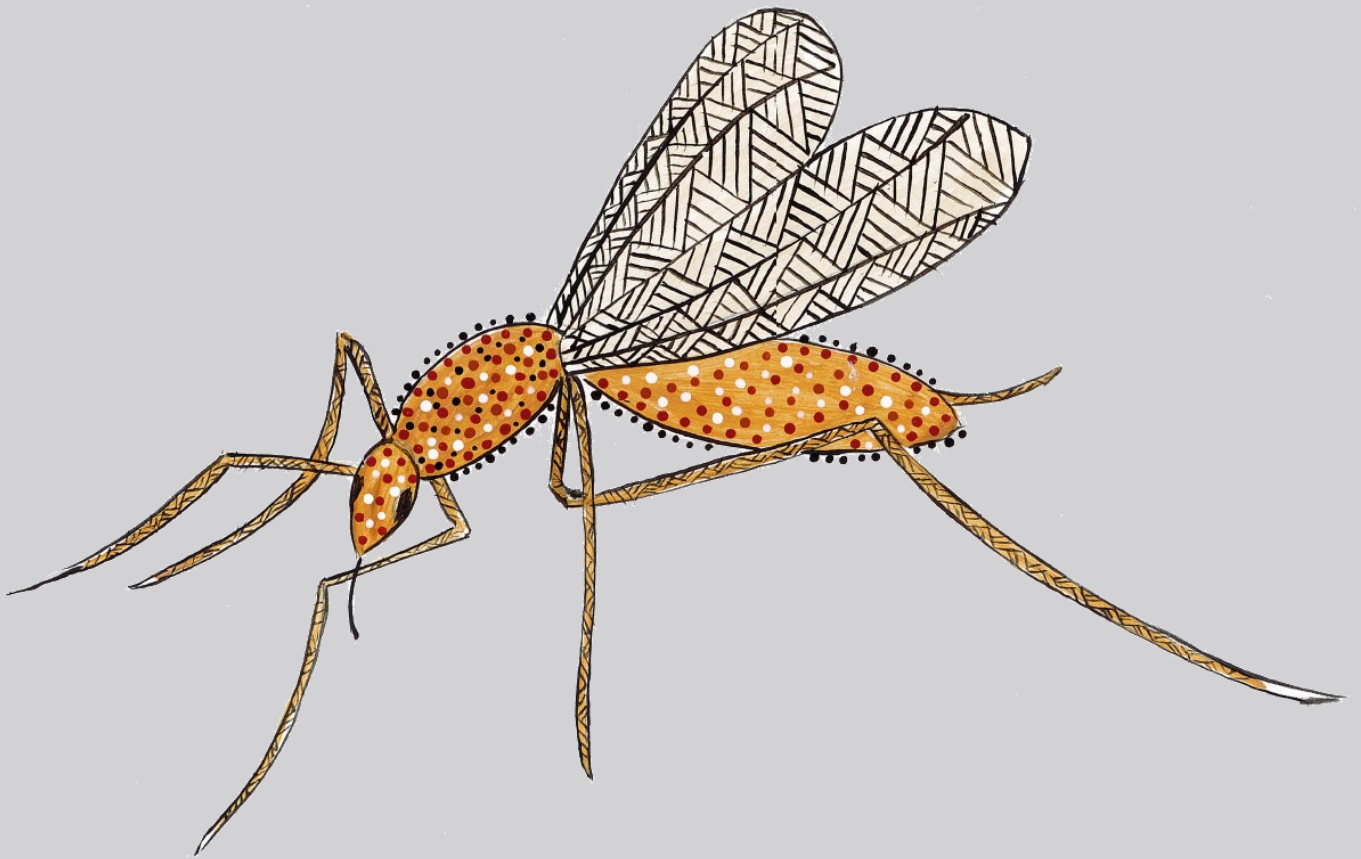
Guwadhāa refers to the tree and the fruit, which is ripe at this time. The fruit can be a bit sour but is made into jam or dried and made into paste – it is high in water and carbohydrates. The stone can be cracked to get the kernel which is very high in energy, protein and fat—it can be eaten raw, or pounded into an oil for moisturiser. The stone or seed is traditionally used as an ornament.

(From: *Gamilaraay, Yuwaalaraay and Yuwaalayaay Dictionary*, Ash et al., 2003)

Mugiin.gaa-gil

Sandfly month

November

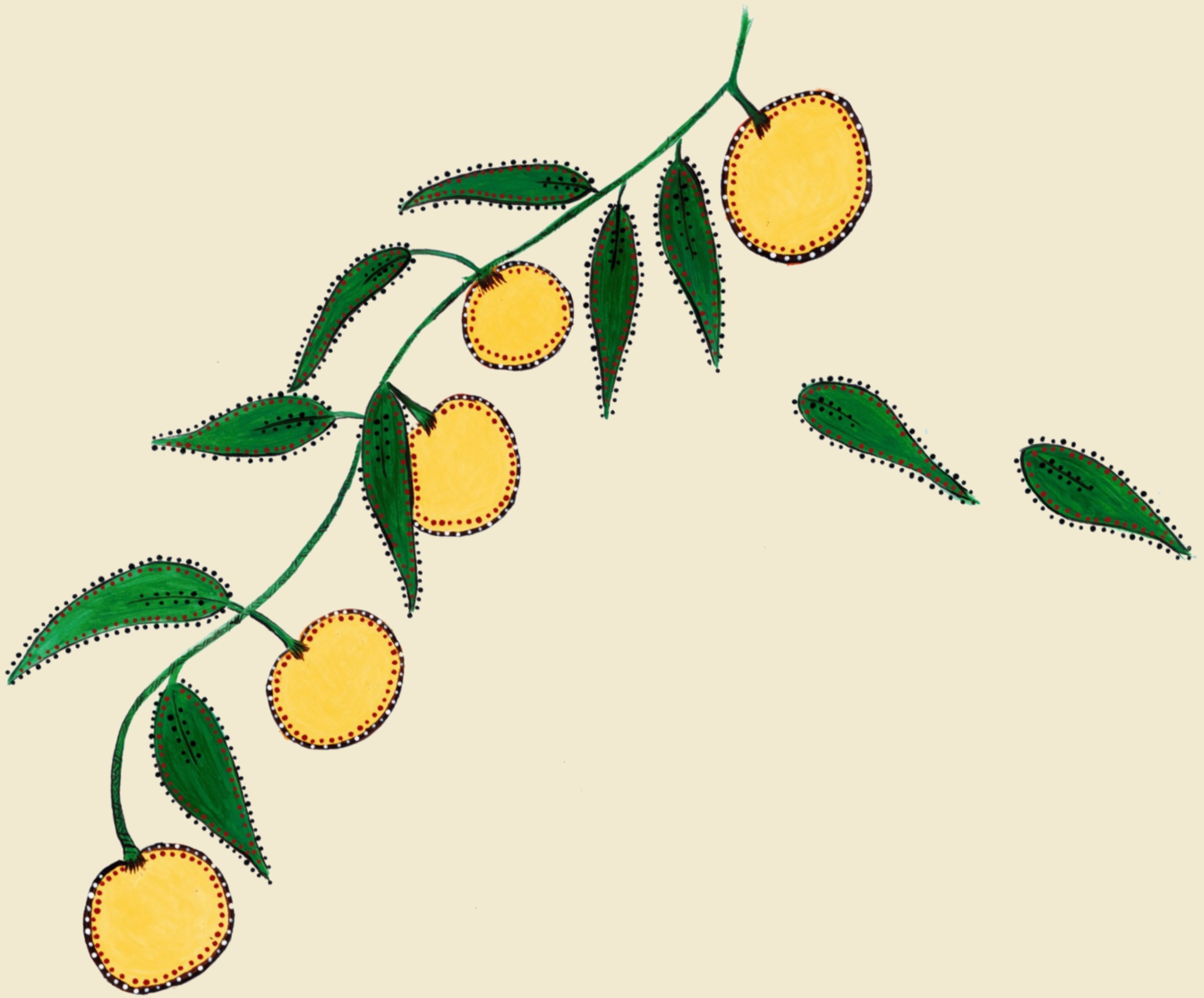


Mugiin.gaa come after floods, which can occur at this time.

Bambul-gil

Native orange month

December



The fruit of the **bambul** tree (*Capparis mitchellii*) are ripening at this time. This tree is important in the Boobera Lagoon story. The fruit is a good source of vitamin C and thiamine. For more information, see the dictionary (*Gamilaraay, Yuwaalaraay, and Yuwaalayaay Dictionary*, Ash et al., 2003).