

Gamilaraay months

Gayn.gayn-gil

Desert lime month

January



Gayn.gayn fruit is full of flavour and vitamins.

Gaagulu-gil

Bush banana month

February



The flowers, leaves and pods of gaagulu can be eaten.

Ngaybaan-gil

Nepine fruit month

March



Ngaybaan fruit ripen at this time. Parts of the plant are used for medicine.

Bulawaa-gil

Emu pair month

April

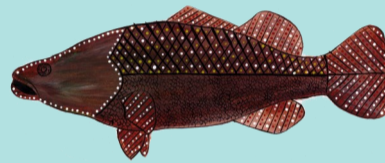


This is the time when pairs of emus, bulawaa (from bulaarr 'two'), are breeding.

Guduu-gil

Murray cod month

May



Fishing for guduu starts after the first big frosts and continues all through winter.

Garriil-gil

Cold month

June



This is the garriil time.

Barrgay-gil

Emu chick month

July



The emu chicks are called barrgay now that they have lost their stripes.

Giirray-gil

Yabby month

August

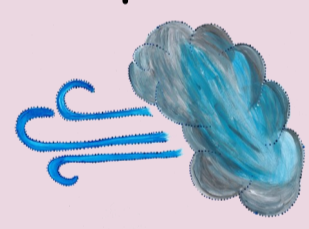


Giirray (yabbies, crawfish) are breeding in the rivers.

Maalinha-gil

Southwest wind month

September



Maalinha are the breeze and showers which come from the southwest at this time.

Guwadhaa-gil

Quandong month

October

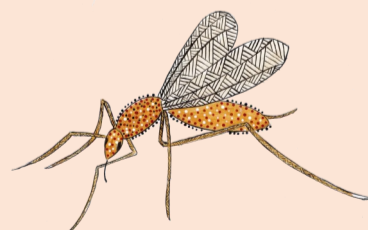


Guwadhaa fruit ripen at this time and can be made into jam. The kernel or seed can be used as an ornament.

Mugiin.gaa-gil

Sandfly month

November



Mugiin.gaa come after the floods which occur at this time.

Bambul-gil

Native orange month

December



Bambul fruit is ripening. The bambul tree is important in the Boobera Lagoon story.

Names for the English months were discussed at a meeting of Elders and linguists in Walgett in 2000. These words reflect what is happening on country at the time. Together with the suffix -gil from gilay, 'moon', they have been agreed by the Winanga-Li Elders for the Yaama Gamilaraay! program. For more information about the words, please see the *Gamilaraay, Yuwaalaraay and Yuwaalayaay Dictionary*, downloadable at www.yuwaalaraay.com



Winanga-Li
Aboriginal Child & Family Centre



Education



ARC CENTRE OF EXCELLENCE FOR
THE DYNAMICS OF LANGUAGE



ANU

THE AUSTRALIAN NATIONAL UNIVERSITY

Yaama Gamilaraay! 2021
Artwork by Sharon (Dawnie) Wortley
www.winanga-li.org.au