

guwaguway



A traditional story tells that the galah's colour is from when Wuulaa the frilled lizard threw a boomerang which hit Gilaa's head, causing blood to flow down her body.

pink

(reddish, from **guway**—blood)

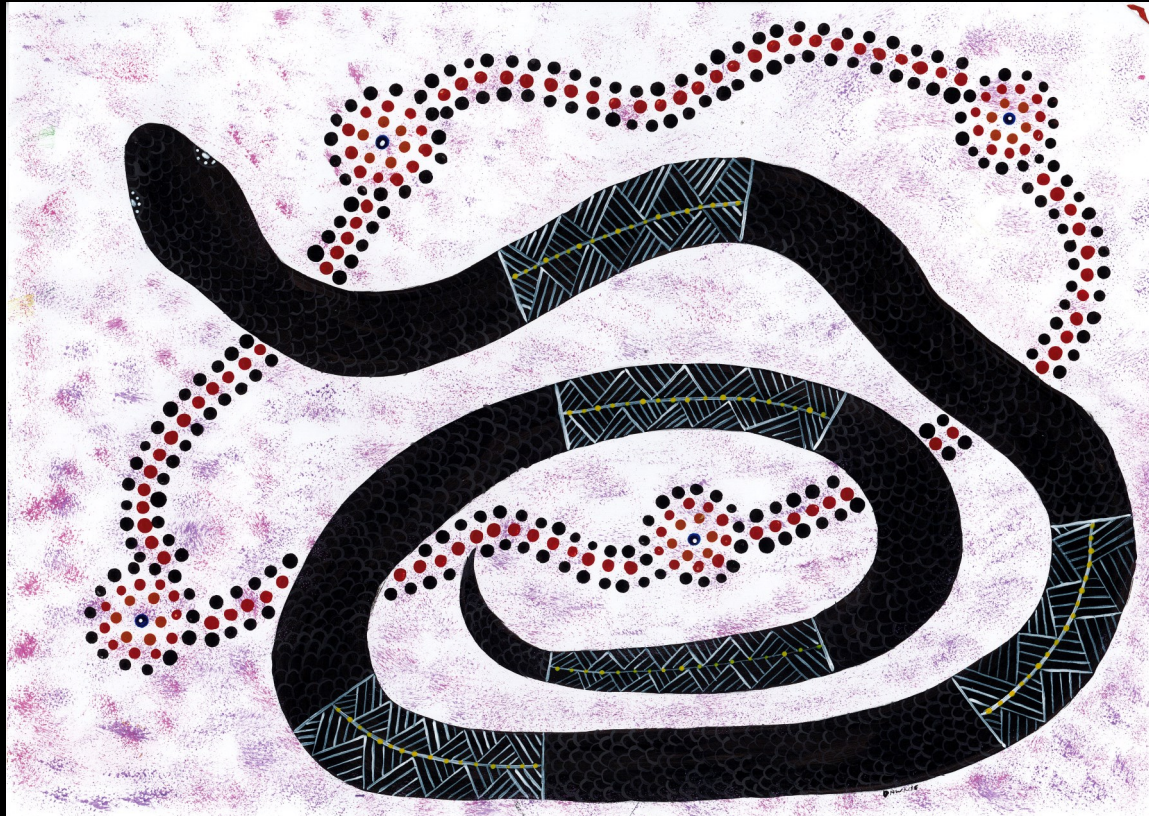
gunagunaa



brown

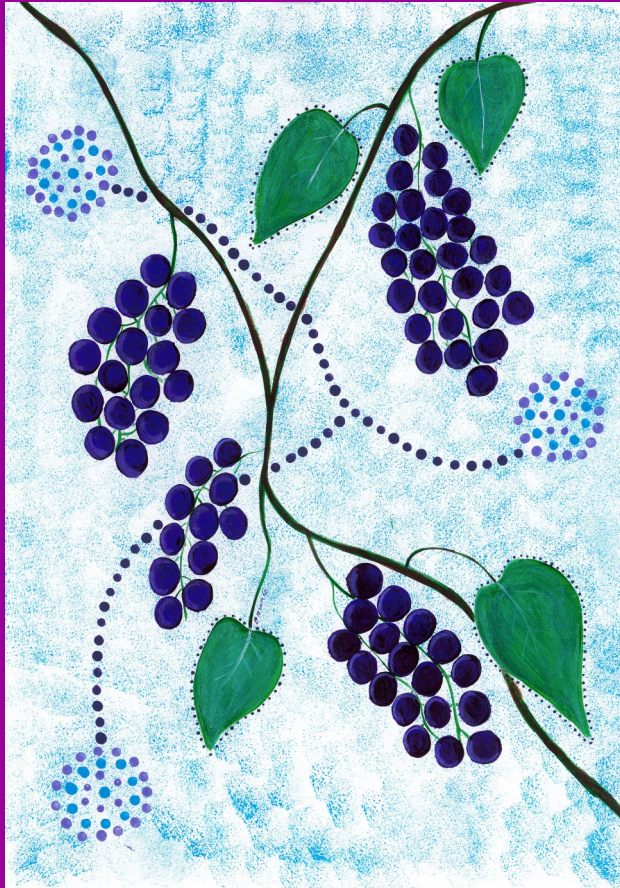
(from *guna* – excrement)

buluuy



black
(also night, dark)

bibubibu



purple

(from **bibu** — *dillon bush/wild grape*, because of its purple berries)

guwaymbarra



red

(from *guway* – *blood*)

banggabaa



white

(The common word for *white*. Possibly from **banggaa**, *white*, and **-baa**, *place of*. A *butterfly* is **balabalaa**, from **balaa**, another word for *white*. Originally **balabalaa** was the name for the *white butterfly*, but now it is a general name for any butterfly.)

yiluwidi



blue

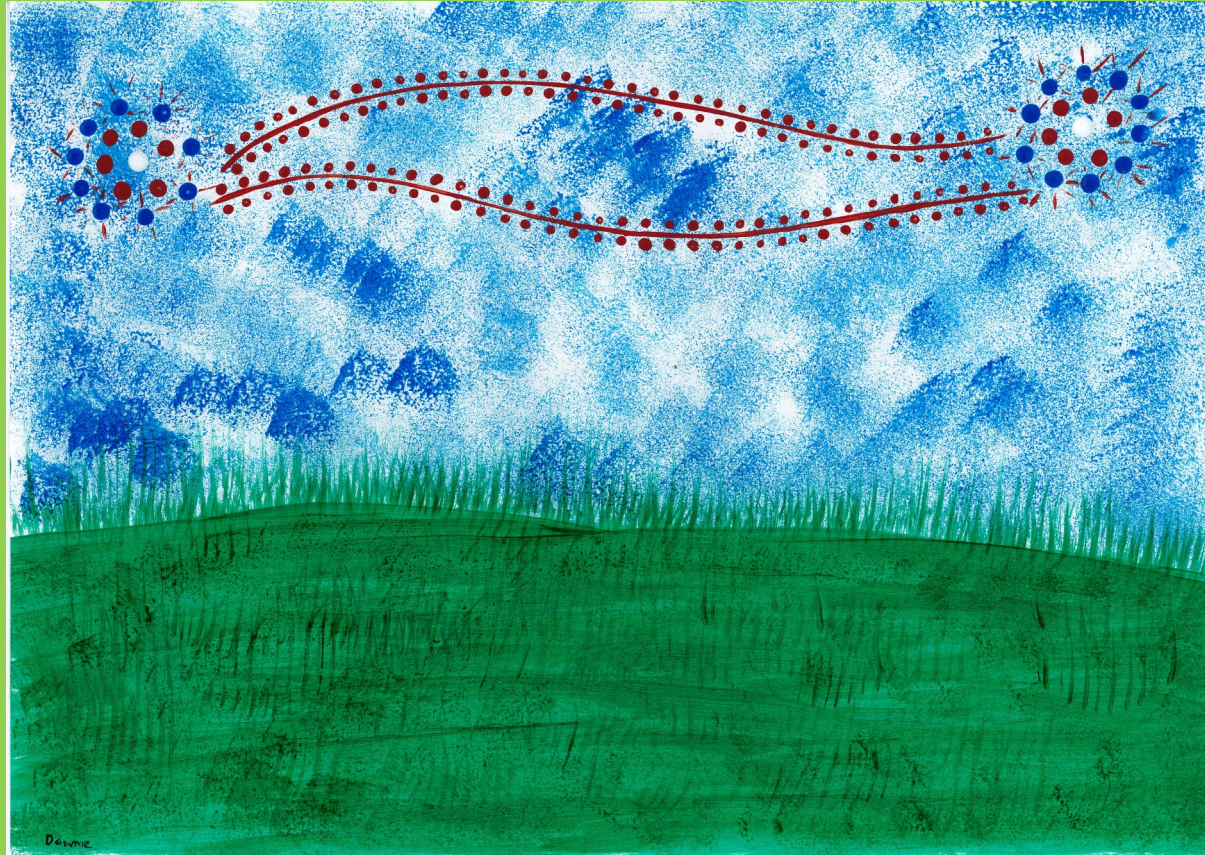
gidjirrgidjirr



yellow

(from **gidjiirr** – *gidgee/wattle*, because of its yellow flowers)

gawarrawarr



green

(possibly related to garaarr—grass)

bambubambul



orange

(from **bambul** —*native orange tree*)